



Thanks to our 2015 Donors:

\$1001-5000 Level

Mike & Linda Howell • Northwest Justice Project • Rich Jacks • Ag Forestry Leadership Class of '36

\$501-1000 Level

Sonia Schmitt • Wal-Mart • First Church of Christ-Scientist • Annie Capestany • Jane Snyder • Walla Walla University Church of Seventh Day Adventists • David Legenfelder Sr. • Mary Johnston • Kerry Shiels • Michelle Southern • Austin Archer

\$101-500 Level

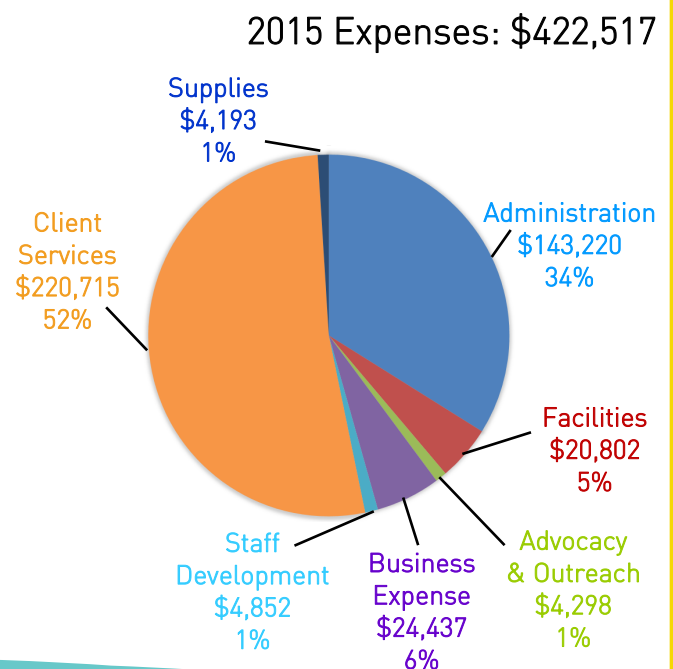
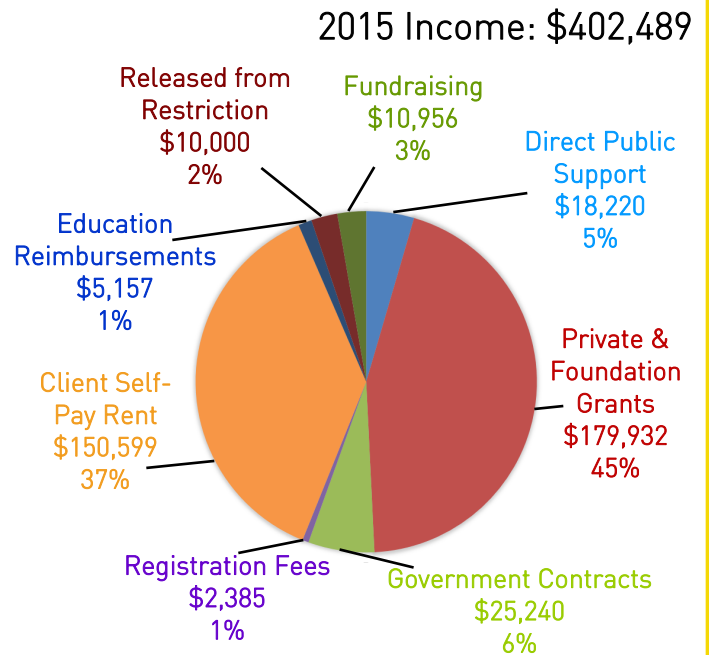
Gary Southern • Eastgate Lions Club • Arline Kerns • Sally Kearsley • Lori Loseth • George Bridges • Benjamin Gibbs • Chuck Hindman • Michael J Flauharty • Rhonda Olson • Loraine Rieken • Susan Palmer • Douglas Juers • Tricia Schulte • Anastasia Christman • Darrel Martin • Paul Rasmussen • Rev. Steven Woolley • Jim Gilmore • Ben Brink • Kay Maxfield • Gloria and Merrill Camp • Fred Lieband • Kurt Othberg • Steven Van Ausdle • Gary and Jan Bainter • Barbara Hoffman • Dorothy Knudson • Janey McKern • Mark Beck • Holly Delibertis • Jill Zagelow

\$1-100 Level

Judy Anderson • Barbara Bengel • Barbara Daniel • Robertta Hunt • Treda McCaw • Frederick Moore • Sara Moore • Nancy Wolfe • Dianna Woolley • Christine Young • Lalani Smiley • Lois Blackwelder • Bob and Naomi Fulgham • Henry's Ace Hardware • Whitman College • Richard McFarland • John McKern • Jennifer Osterman • Allen Pomraning • Marleen Ramsey • Albert Randolph • Pat Templeton • Dan Thiessen • Jean Tobin • Terri Trick • John Knowlton • Jerry Makus • State of Washington County of Columbia • Scott Naccarato • Trinity Orosco • Michael Rasch • Myles Farrington • Betty Appling • Shelly Bates • Douglas Bayne • Earl Blackaby • Heidi Dobson • Flores Law Office • J. Gerbino • Nonda Gibbard • John Hartzell, Attorney at Law • Don and Judy Harwood • Gretchen Lech • Rebecca Makus • George Marlton • Jan McGowan Non-Profit Consulting • Marie Metheny • Suzanne Morrissey • Steven Moss • Michelle Mulhern • Sue O'Neil • Tom Telfer • Chuck Templeton • Tony and Joyce Turner • Claire Valente • Jackson Vance-Matthews • Pioneer United Methodist Church • Central Christian Church • Ramón Gomez • Sonja Aikens • Elanor Buckley • The Sherwood Trust Foundation • Karin Gitchel • Linda Herbert • Dale Kegley • Dan Reid • Gail Roberts • Dolores Walker • Blue Mountain Action Council • Carlan Bradshaw • Dorothy Hockett • Donna and Dave Jones • Beth Powers • Winifred Clark • Glenna Awbrey • Aubrey Hill

We provide persons being released from incarceration with essential tools to successfully reintegrate into our community as productive contributing members of society.

STAR Finances General Overview for 2015



See reverse for in-depth program reports

2015 STAR Program Statistics

TRANSITION SPECIALIST:

The WSP transition program was volunteer-run until March 2014, when STAR hired **Kathy Farrell Guizar** into the position. In 2015, Kathy:



- Served: 237 clients
- 131 clients applied to school
- 161 FAFSAs completed

Kathy primarily focuses on education planning and coordinating with colleges and universities from all over the state to facilitate the transition from inmate to student.

HOUSING COORDINATOR:

Joe Field has been STAR's Housing Coordinator since August of 2014. During 2015, he provided:



- Direct housing: 43 clients
- In-house group classes (R2R): 23 clients

In addition to working directly with clients, Joe has focused on building relationships between STAR and the landlord community. He teaches an in-house Ready to Rent course, regularly attends community safety meetings, and provides educational materials to area landlords.



EMPLOYMENT SPECIALIST:

STAR's Employment program began in August of 2014 with the hire of **Lenel Parish**. In 2015, Lenel:



- Served: 63 clients
- 24 clients secured interviews
- 17 accepted positions
- 3 temporary positions

Lenel teaches Employment Readiness courses to STAR clients, assists in resume development and job searches, places people through on-the-job-training, and pursues employment outreach to businesses.

Lenel's employment with STAR is possible through a financial and staffing partnership with the Blue Mountain Action Council.

CASE MANAGER:

Michael Switzer joined the STAR team in October of 2015. Case management numbers combine Michael's contributions along with his predecessor for our 2015 totals:



- Served: 127 clients
- In-house group classes (MRT): 22 clients

Services provided include: education referral and planning, health care service enrollment, state ID restoration, benefits enrollment, in-house Moral Reconciliation Therapy classes, and community services referrals.